



# Spring 2021 Newsletter

The past year has been unprecedented. In a whirlwind of a global pandemic, racial justice protests, devastating wildfires, and an attempted insurrection, we have witnessed an incredible, historic first.

The first ever woman and person of color was elected Vice President. Kamala Harris is a role model and an inspiration to young girls across the globe, many of whom can now stare at the TV and see someone who looks like them leading the country. Her famous phrase, "I'm Speaking," has emboldened many young girls as they stand up for themselves.



*retrieved from: (NBC News and Getty Images)*

A powerful and awe-inspiring group of women graced the inauguration stage on January 20th. Vice President Kamala Harris, First Lady Dr. Jill Biden, Former First Lady Michelle Obama, Inaugural & National Youth Poet Laureate Amanda Gorman, Jennifer Lopez, and Lady Gaga all used their positions and their talents to usher in a new year and a promising presidency.

The leadership these women exude inspire us as we continue to work to advance women's leadership locally and globally through pioneering research, innovative programming, and collaborative engagement. As such, IWL continues to speak up and actively pursue intersectional inclusivity and gender equity.



*retrieved from: (abc NewsGO)*

---

## Introducing IWL Faculty Fellows

The Institute for Women's Leadership is delighted to announce its first cohort of Faculty Fellows. For this spring's semester, IWL introduces **Drs. Ayleen Cabas-Mijares** and **Amber Wichowsky** to its team. As IWL Faculty Fellows, Ayleen and Amber will bring their respective experiences and expertise to help IWL continue to engage, inspire, and transform women's leadership in both new and ongoing efforts, including but not limited to leading IWL Research Socials this semester. Please join IWL in welcoming our Spring 2021 IWL Faculty Fellows.



---

## Pay Equity Speaker Series

We are excited to launch the first of three speakers for the IWL Pay Equity Speaker Series on February 16, at 1 PM, Central. To kickoff this engagement, **Jocelyn Frye**, a senior fellow at the Center for American Progress, will draw from her accomplished professional portfolio as a lawyer, advocate, and government servant to present on the importance of paycheck fairness and the need for equity audits to achieve real pay equity.



IWL's next event for the IWL Pay Equity Speaker Series will feature **Saru Jayaraman**, President of One Fair Wage and Director of the Food Labor Research Center at University of California Berkeley, on March 16. Saru will draw from her visionary experience, supporting data, and more as she addresses subminimum wage and its role in the movement for pay equity.



The final event of the IWL Pay Equity speaker series will take place on April 20, and feature **Erika Moritsugu**, Vice President at The National Partnership for Women and Families. Erika will draw from her impressive experience and work in private, nonprofit, and government service sectors as she addresses the role of paid family and medical leave and its importance in achieving pay equity.



For more information on the IWL Pay Equity Speaker Series and individual event registration, please visit [IWL's Pay Equity site](#).

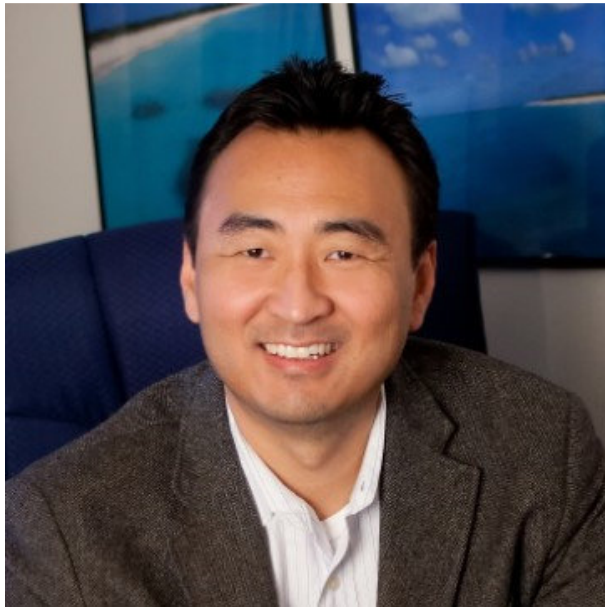
[Register Here](#)

## Research Spotlight

IWL's Spotlight on Research series launches this semester and consists of episode releases each month.



Each episode features a scholar who advance IWL's mission to advance leadership locally and globally through pioneering research, innovative programming, and collaborative engagement. The scholars featured this spring are **Drs. Darren Wheelock, Karen Robinson, Noelle Brigden, and Stephanie Rivera Berruz**. Please see our **Spotlight on Research** page for more details and follow us on **YouTube** and social media to track each episode as it launches.





## Research & Projects



### IWL Research Socials

IWL will continue to host monthly Research Socials this semester for researchers at Marquette University: Feb 2 at 4:30 PM, March 9 at 1 PM, and April 8 at 4:30 PM.

The Research Socials aim to create lively discussions and offer a place to hear about interesting research being done across campus.

Interested Marquette researchers should e-mail [IWL@marquette.edu](mailto:IWL@marquette.edu) to join this group's network.

### IWL Grant Opportunities

Even when the world is not contending with a global pandemic, limited funding for research can restrict opportunities in many ways. Having identified this, IWL extends two different funding paths for researchers at Marquette this year: **IWL Mini-Grants** and the **2021 IWL Interdisciplinary Summer Grant program**.

The IWL Mini-Grant program offers research mini-grants of up to \$1000 that are designed to support research-related activities that advance scholarship or academic knowledge in the area of gender or sex. The funds can be used for a range of research expenses, such as research participant incentives or to pay student research assistants but cannot be used to pay for the salary of faculty/staff nor resources already available on campus/from Marquette. **IWL Mini-Grants applications** are reviewed and awarded on a rolling basis.

Summer 2021 will usher in the second summer of the IWL Interdisciplinary Summer Grant awards and is now accepting applications from Marquette researchers. Through this grant program, IWL helps to foster interdisciplinary research collaborations across the Marquette University community that furthers our understanding of gender and sex. The deadline for **2021 IWL Interdisciplinary Summer Grant applications** is Friday, March 5, 2021, by 4 PM. Awards will be announced by late April.

If not for the gracious generosity of IWL donors, neither of these opportunities would be possible. IWL and its research community at Marquette heartfully sends its gratitude to each and every donor for helping make this possible.

---

## **Spring 2021 Events**

### **Tuesday, February 2, 4:30 PM – IWL Research Social**

For researchers at Marquette University to gather, network, and learn of other research work.

### **Monday, February 8, 2021, 5:30 PM – Meet-n-Eat with Dr. Shital Chauhan Vora**

Grab your dinner and join us for this virtual discussion with Dr. Vora, Marquette Alumna and Co-Founder & Chief Executive Officer of Global Brigades. Learn how she used her entrepreneurial spirit to evolve her passion project into one of the most impactful student-driven, poverty-alleviation efforts in the world. Shital will also discuss the organization's recent-and-remarkable pivot to virtual advocacy in the face of COVID-19. Register via



[Eventbrite](#). This event coincides with Marquette's [Mission Week 2021](#) programming and is a collaboration with Marquette's [707 Hub](#), [WIN](#), and the [College of Health Sciences and Physical Therapy](#) department.

### **Tuesday, February 9 – Spotlight on Research**

[Episode 2, Part 1](#) launches

### **Friday, February 12, 10:00 AM – Our Roots Say that We're Sisters: An Image of Hope, a Haggerty Museum of Arts & Faber Center collaboration**

Join Marquette mural artist Mauricio Ramirez in conversation as we reflect on the hope that art inspires, specifically with Ramirez's mural, "Our Roots Say that We're Sisters," which is on the south exterior wall of Varsity Theater (Holthusen Hall, the home of the IWL office, on the Marquette University campus). [Registration](#) is open to the broader community and is part of Marquette's [Mission Week 2021](#) programming.

### **Friday, February 12, 12:00 PM – What Would an Ideal Family-Friendly Higher Ed Institute Look Like?", an ADVANCE program**

A panel discussion with university leaders both from within and outside of Marquette. [Registration](#) is open to the Marquette community.

### **Tuesday, February 16, 1:00 PM – IWL Pay Equity Speaker Series**

[Jocelyn Frye](#) speaks on Paycheck Fairness & Equity Audits with Kelly Ritchie, Senior Vice President of Employee Services, discussing the efforts, challenges, and successes Lands' End has experienced in this area.

Click [HERE](#) to Register.

### **Thursday, February 18, 10:00 AM or 1:00 PM – Men Allies for Gender Equity, an ADVANCE Workshop**

This two-hour interactive virtual workshop, presented by Dr. Roger Green, encourages and equips men to serve as effective allies for gender equity in STEM settings. The [Men Allies for Gender Equity](#) workshop utilizes a men-only format, which helps promote candid discussions and safe conversation spaces for the target male audience.

[Register on Eventbrite](#) by February 11.

### **Tuesday, February 23 – Spotlight on Research**

[Episode 2, Part 2](#) launches

### **Tuesday, March 9, 1:00 PM – IWL Research Social**

For researchers at Marquette University to gather, network, and learn of other research work.

### **Tuesday, March 16, 1:00 PM – IWL Pay Equity Speaker Series**

Saru Jayaraman speaks on the Subminimum Wage with Ryan Clancy drawing from local and state efforts around the topic from his experience and work with PRAWN (Progressive Restaurants and Activists of Wisconsin Network) and as an activist, a restaurateur, a Milwaukee Independent Restaurant Coalition (MIRC) Board Member, as well as serving the 4th District Supervisor for Milwaukee County.

### **Tuesday, March 23 – Spotlight on Research**

Episode 3 launches

### **Thursday, April 8, 4:30 PM – IWL Research Social**

For researchers at Marquette University to gather, network, and learn of other research work.

### **Tuesday, April 20, 1:00 PM – IWL Pay Equity Speaker Series**

Erika Moritsugu speaks on the role of paid family and medical leave and their importance in achieving pay equity.

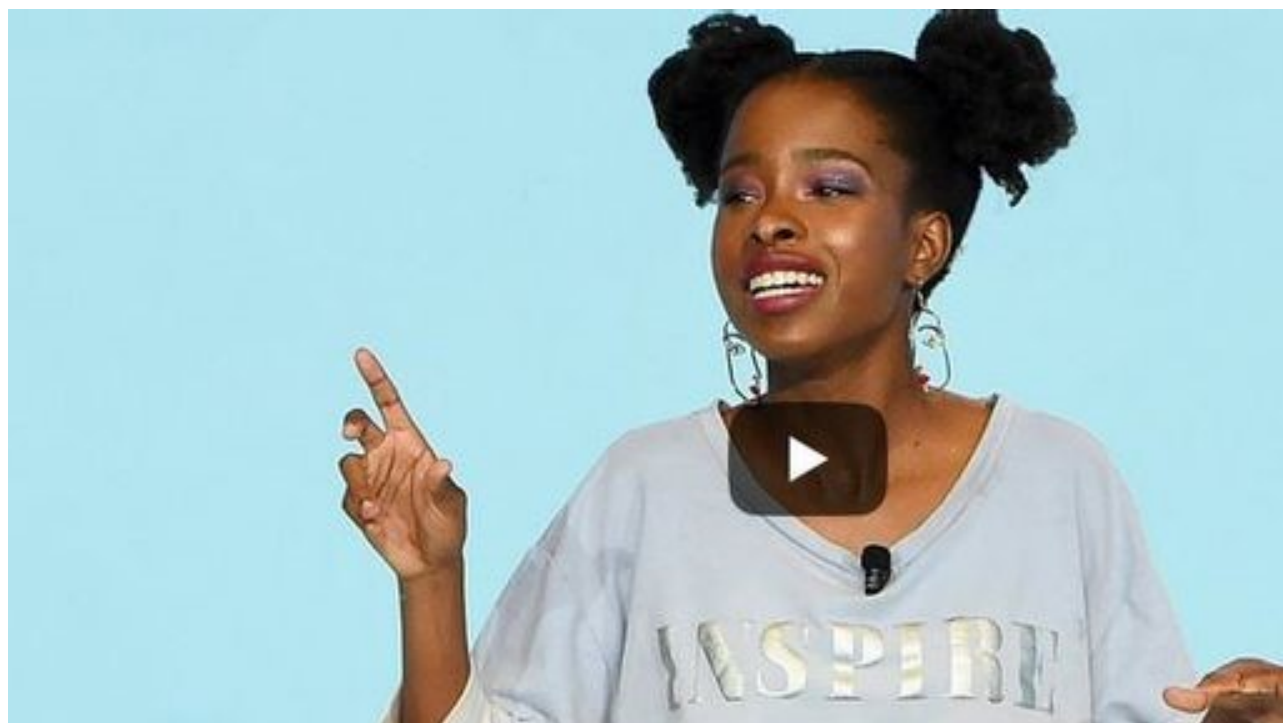
### **Tuesday, April 27 – Spotlight on Research**

Episode 4 launches

---

## **IWL Recommendations**

With our mission to Engage, Inspire, and Transform, the IWL team recommends diving deeper into [Inaugural & National Youth Poet Laureate Amanda Gorman](#)'s work, such as her performance at the 2019 Forbes Women's Summit below. Enjoy!



---

### **IWL Mission**

The mission of the Institute for Women's Leadership at Marquette University is to advance women's leadership locally and globally through pioneering research, innovative programming, and collaborative engagement.

**Engage. Inspire. Transform.**