

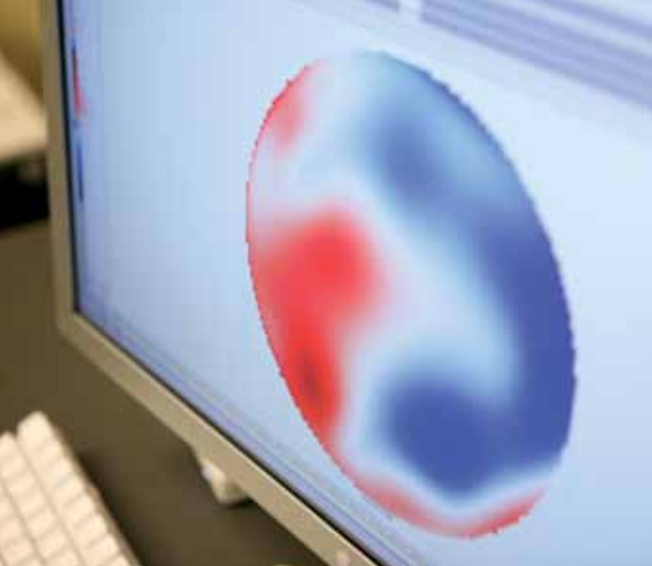


Graduate program in  
**HEALTHCARE TECHNOLOGIES  
MANAGEMENT**



**MARQUETTE**  
UNIVERSITY

Be The Difference.



# Why a master of science in Healthcare Technologies Management at Marquette?

Our graduate program is the first in the United States to combine business, medical technology and healthcare and is a joint degree program offered by Marquette and the Medical College of Wisconsin. Unlike an M.B.A., graduate engineering or engineering management program, our targeted curriculum prepares you specifically for management positions in the medical device industry, clinical environments or healthcare consulting firms.

**Be more.** Give your technical skills some backup. Whether you're an undergraduate seeking an advanced degree or an experienced engineer preparing for career advancement, you'll gain a formal business and management education, updated technical skills, and a greater understanding of the healthcare delivery and regulatory environments.

**Be relevant.** From day one, you'll apply the management skills you learn — making each class relevant and practical.

**Be selective.** You'll have a choice of electives and flexibility in your professional project design, allowing you to tailor your graduate studies to your job responsibilities, career goals and interests.

**Be supported.** Our small class sizes provide greater individualized faculty interaction and peer collaboration.

**Be needed.** Every day, skilled professionals with technical and managerial skills and an understanding of the healthcare delivery and regulatory environments are in great demand.

## ABOUT MARQUETTE

**Our programs.** Marquette offers 50 doctoral and master's degree and more than 30 graduate certificate programs, and a School of Dentistry and Law School. And we have a variety of specializations to help you tailor the curriculum to your needs — an opportunity not offered by all universities. **Our students.** We enroll approximately 3,500 graduate and professional students from diverse cultural and educational backgrounds and 53 countries all over the world.

**Our faculty.** Marquette's almost 700 full-time faculty represent renowned scholars and industry experts. As a student, you'll also benefit from established collaborations within the local business and nonprofit communities, as well as other nationally renowned institutions within the region, including the Clinical and Translational Science Institute, Medical College of Wisconsin, Milwaukee School of Engineering, University of Wisconsin system, and others.

**Our commitment.** Class sizes are small and are usually taught by regular faculty members who are conducting cuttingedge research. Your teaching will be informed by current research, and you will often have the opportunity to participate in research.

**Our network.** As a Marquette graduate, you'll become part of our alumni family of 110,000 around the world — creating a professional network that spans from right next door to across the globe.

**Our values-based education.** As a Jesuit institution of higher education, Marquette continues a centuries-old tradition of academic excellence, development of the whole person and research that addresses societal needs.

## YOUR JOURNEY

Healthcare technologies management is a rapidly growing field, and, in today's economic climate, that's saying something. According to the 2010-11 edition of the Bureau of Labor and Statistics' *Occupational Handbook*, employment of engineering managers is projected to grow 8 percent from 2008-18 — that's as fast as the average for all occupations. However, opportunities for engineering managers should be better in rapidly growing areas of engineering, such as biomedical engineering.

The *Occupational Handbook* also said engineers and scientists with strong communication and business management skills will be in the best position to become managers. Marquette's healthcare technologies management program will prepare you to take advantage of those opportunities.

### Master of science

#### Course work:

Students must take a minimum of 37.5 credit hours (12 classes), including core healthcare technologies management, business/management and elective courses that coincide with their career goals. Students also must complete a professional project.

- Full-time students must enroll in at least 12.5 credit hours (five to six classes) per semester to complete the program in one year.
- Part-time students who enroll in three to six credit hours (one to two classes) per semester typically complete the program in two to three years.
- All classes are offered in the evening, and some business classes are offered Saturdays. Two core healthcare technologies management courses are taught online.
- Some required classes include marketing management, managerial accounting, technology assessment, product development of medical devices, the environment of healthcare delivery and organizational behavior. For a complete list, visit [marquette.edu/grad](http://marquette.edu/grad).
- Average class size is 10 students.



Marquette also offers a course-only master of engineering in biomedical engineering for professionals in the field looking to advance their careers. For more information, visit [marquette.edu/masterengineeringbme](http://marquette.edu/masterengineeringbme).



“As a design engineer for GE Healthcare, my career will benefit from the in-depth understanding of the healthcare provider's perspective on technology procurement, utilization and the clinical setting, which the healthcare technologies management program provides to students.”

**Andrew Heuttner**  
Master's student

#### Other academic activities:

- Required seminars include:
  - Communication skills for technical managers (fall semester)
  - Making the transition from engineer to manager (spring semester)
- Internship placement assistance is available upon request for qualified full-time students.

For more program details, including requirements and course descriptions, see the *Graduate Bulletin* at [marquette.edu/grad](http://marquette.edu/grad).

## YOUR FACULTY MENTORS



### Marquette

**Dr. Jay R. Goldberg, PE.**, director of healthcare technologies program and associate professor of biomedical engineering

*Medical device design and development, biomaterials, degradation and failure of implantable medical devices, forensic engineering, management of the product development process*

**Dr. Kathryn Schroeter, R.N., C.N.O.R.**, associate professor of nursing  
*Ethics in perioperative nursing, impact of professional certification on nursing practice*

**Dr. Phil Weinfurt**, adjunct instructor of biomedical engineering  
*Assessment of new medical technology, clinical information systems, processes for more rapid implementation of new technologies for healthcare delivery*

### The Medical College of Wisconsin

**Dr. Joseph O. Hill**, associate professor of research technology and informatics

*Technology transfer, medical microbiology, drug/medical device development, regulatory affairs*

**Dr. Ryan Spellecy**, associate professor of bioethics and psychiatry and behavioral medicine

*Ethical issues in mental illness and mental health, death and dying, research ethics*

**Dr. Charles R. Wilson**, associate professor of radiology

*X-ray medical imaging, technology in medicine, picture archive and documentation*

For more information about the department's faculty members, visit [marquette.edu/hctmfaculty](http://marquette.edu/hctmfaculty).



The program enhanced my project management skills, expanded my business knowledge, and allowed me to work full time and take classes in the evening. I was able to complete my required professional project in an area that benefited my employer and met my career goals. This helped me apply what I learned in the curriculum to my daily work experience."

### Kelly Milewski, Grad '06

Project manager  
Epic Systems Corp.  
Verona, Wis.



## YOUR RESOURCES

As a graduate student in healthcare technologies management, you'll have access to:

- all available student services at Marquette and the Medical College of Wisconsin, as well as faculty who can serve as project advisers.
- Froedert Memorial Lutheran Hospital Medical College faculty who serve as clinical project advisers.
- courses within Marquette's AACSB-accredited M.B.A. and nursing programs.
- networking opportunities through peer collaboration as part of your course work.





Our graduate programs also provide excellent resources beyond the classrooms. Thanks to our location in downtown Milwaukee and community-connected faculty, you'll enjoy an urban setting with access to a vibrant arts scene, professional sports, restaurants and nightlife.

### Marquette University

- Access to networking, career counseling, and job searching counselors and seminars through our free Career Services Center
- More than 20 academic centers and institutes that foster research in end-of-life care, ethics, neuroscience, rehabilitation engineering, transnational justice, water quality, sports law and others
- Access to more than 1.7 million volumes of books and bound journals, 22,000 journals and other serials in digital format, laptops for checkout, and extensive special collections (Raynor Memorial Libraries are open evenings and weekends)
- Access to a secure high-speed wireless network (54Mbps) for laptops and other devices
- Remote computer access to campus-only resources through our VPN
- Student Health Service, Counseling Center and Campus Ministry
- Sports recreation and fitness facilities
- Big East Conference sports, including men's basketball, which has 27 NCAA appearances, 14 Sweet Sixteen appearances, three Final Four appearances and one NCAA championship (1977) and plays in front of 18,000 fans at the Bradley Center

### Milwaukee

- The Milwaukee metropolitan area has approximately 1.7 million people, ranking among the top cities in the United States by population
- Home to 9 Fortune 500 company headquarters, including Harley-Davidson, Johnson Controls, Northwestern Mutual and Rockwell Automation
- Milwaukee offers many art and cultural opportunities, including a repertory theatre, a symphony orchestra, two opera companies, a ballet company, diverse art galleries, a public museum, the Milwaukee County Zoo and the Milwaukee Art Museum
- Professional sports include baseball (Brewers), basketball (Bucks), hockey (Admirals), soccer (Wave) and skating exhibitions at the Pettit National Ice Center (an Olympic training facility)
- Known as the city of festivals, Milwaukee has abundant celebrations throughout the year honoring the city's diverse heritage, including Summerfest — the world's largest outdoor music festival
- More than 10 miles of lakefront, 1,500 restaurants and 15,000 acres of parks

## YOUR INVESTMENT

Furthering your education is an investment you can count on. Financial aid — in several forms — can help meet the costs of your graduate education at Marquette.

### Tuition\*

#### For full-time students:

12.5 credit hours per semester at \$905 per credit = \$11,312.50 per semester

#### For part-time students:

Three to six credit hours per semester at \$905 per credit = \$2,715 to \$5,430 per semester

A minimum of 37.5 credit hours is required to complete the program.

\* Figures provided are based on average credit hours taken per semester and exclude service fees and/or continuous enrollment/continuation course fees. Per-credit cost valid until May 2011.

### Need-based aid

Enroll as a half- or full-time student in a degree program (at least four credit hours, usually two or more classes a semester), and you may be eligible for loans distributed through the Office of Student Financial Aid. Most student loans have competitive interest rates and do not require repayment until after you complete your course of study.

To apply, file the Free Application for Federal Student Aid each year between January 1 and mid-February. It's available from the Office of Student Financial Aid or at [fafsa.ed.gov](https://fafsa.ed.gov). Once you have been admitted to your program and completed your financial aid paperwork, we will determine your eligibility and send you a notice explaining what financial aid you are eligible to receive from the university.

### Additional resources

- Marquette offers a convenient payment plan that divides tuition costs into monthly installments. For more information, visit [marquette.edu/mucentral](https://marquette.edu/mucentral) or contact Marquette Central at (414) 288-4000.
- Employment assistance is available.
- Private lenders feature special educational loans.
- Your employer may offer a tuition-remission plan.
- Some private foundations offer financial aid for graduate study.
- Tax deductions and/or credits can be claimed for work-related educational expenses.

## YOUR OPPORTUNITIES

Where could a master's degree in healthcare technologies management lead you? You'll find our recent graduates ...

### at regionally and nationally known companies, including:

- Aramark
- Baxter Healthcare
- Children's Memorial Hospital in Chicago
- ECRI
- Evanston (Ill.) Hospital
- GE Healthcare
- Johnson & Johnson
- Kimberly-Clark Corp.
- Medtronic
- Philips Medical Systems
- Siemens Medical Solutions
- United Hospital Supply
- U.S. Food and Drug Administration
- VA medical centers

### in a variety of departments, including:

- clinical engineering
- marketing
- operations
- quality assurance
- regulatory affairs
- research and development
- sales

### excelling in their fields as:

- clinical validation managers
- directors
- district sales managers
- project managers
- system engineers

“This program finally fills a real industry need by preparing individuals for the jobs that exist today. When hiring, graduates of this program should be given serious consideration.”

**Raymond T. Riddle, Eng '82**  
Vice president of regulatory affairs  
Standard Imaging Inc.  
Middleton, Wis.

## YOUR FIRST STEP

### We invite you to apply.

#### Application requirement checklist:

- Online application at [marquette.edu/grad](http://marquette.edu/grad) (must be submitted online before any additional admission materials)
- Application fee
- Official transcripts from all current and previous colleges/universities except Marquette
- Three letters of recommendation
- A statement of purpose describing your career goals and how you think the program will help you reach them
- GRE (general test only) with an average score of 60 percent minimum; GMAT or MCAT with an average of nine on the individual scores (waived for individuals with a doctoral degree)
- (International applicants only) TOEFL score or other acceptable proof of English proficiency with a minimum score of 79-80 on the Internet-based (computer) version, not including speaking
- If necessary, submit any additional hard-copy materials in one envelope to:  
Marquette University Graduate School  
P.O. Box 1881  
Milwaukee, WI 53201-1881



### We invite you to speak with a faculty member.

Dr. Jay Goldberg, P.E.  
Associate professor and director of healthcare technologies management program  
Olin Engineering Center, Room 501  
P.O. Box 1881  
Milwaukee, WI 53201-1881  
Phone: (414) 288-6059  
Fax: (414) 288-6069  
E-mail: [jay.goldberg@marquette.edu](mailto:jay.goldberg@marquette.edu)



**MARQUETTE**  
UNIVERSITY

---

**Be The Difference.**

**Marquette University Graduate School**

Phone: (414) 288-7137 or (800) 793-6450, ext. 7

E-mail: [mugs@marquette.edu](mailto:mugs@marquette.edu)

1324 West Wisconsin Avenue | Holthusen Hall, Room 305 | P.O. Box 1881

Milwaukee, Wisconsin 53201-1881

[marquette.edu/grad](http://marquette.edu/grad)