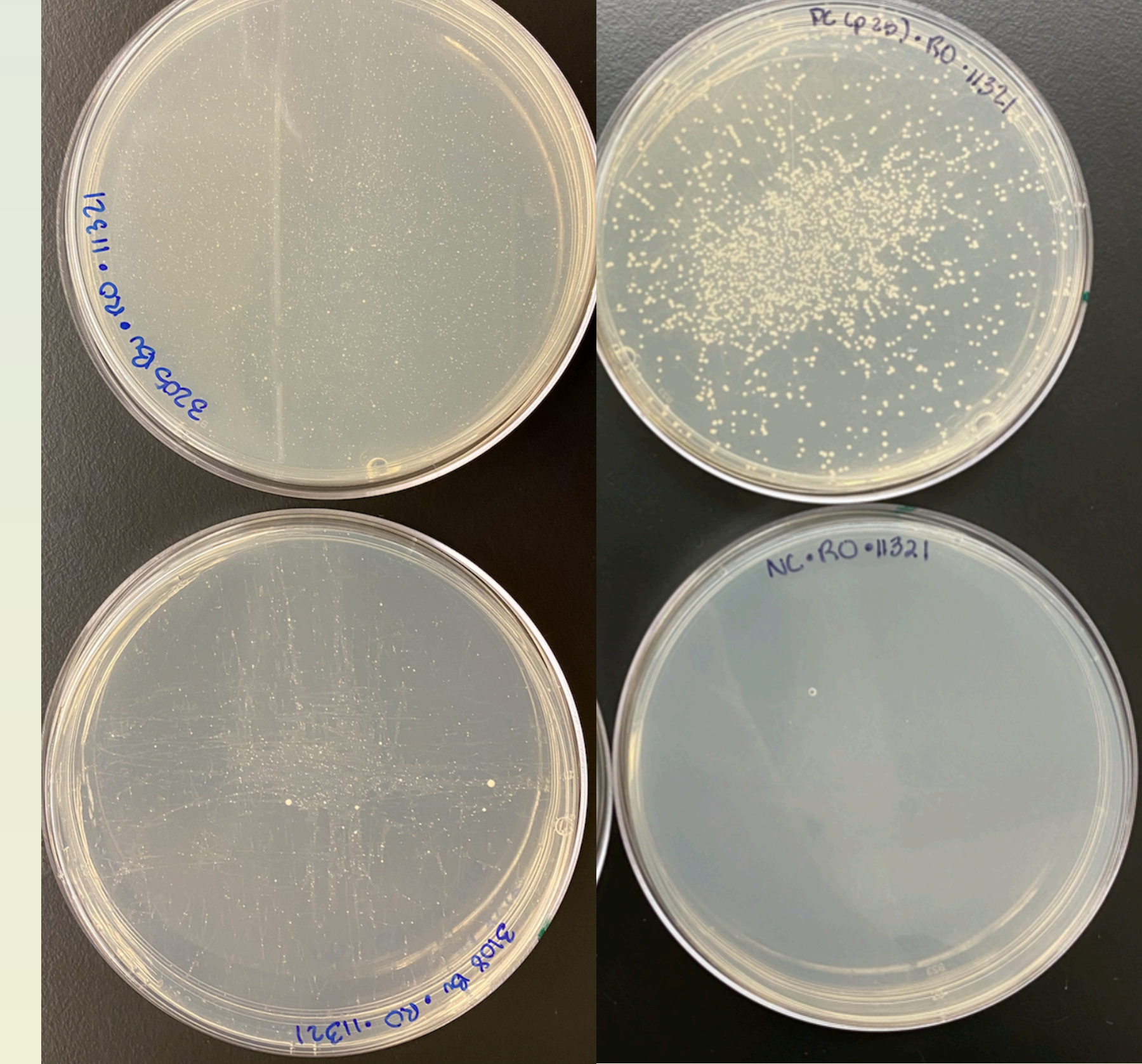


Spatial Sequestration of Alpha-Synuclein

Rebecca Odeh (rebecca.odeh@marquette.edu), Sarah Rolli, Emily M. Sontag

Department of Biological Sciences, Marquette University



Project's Goal

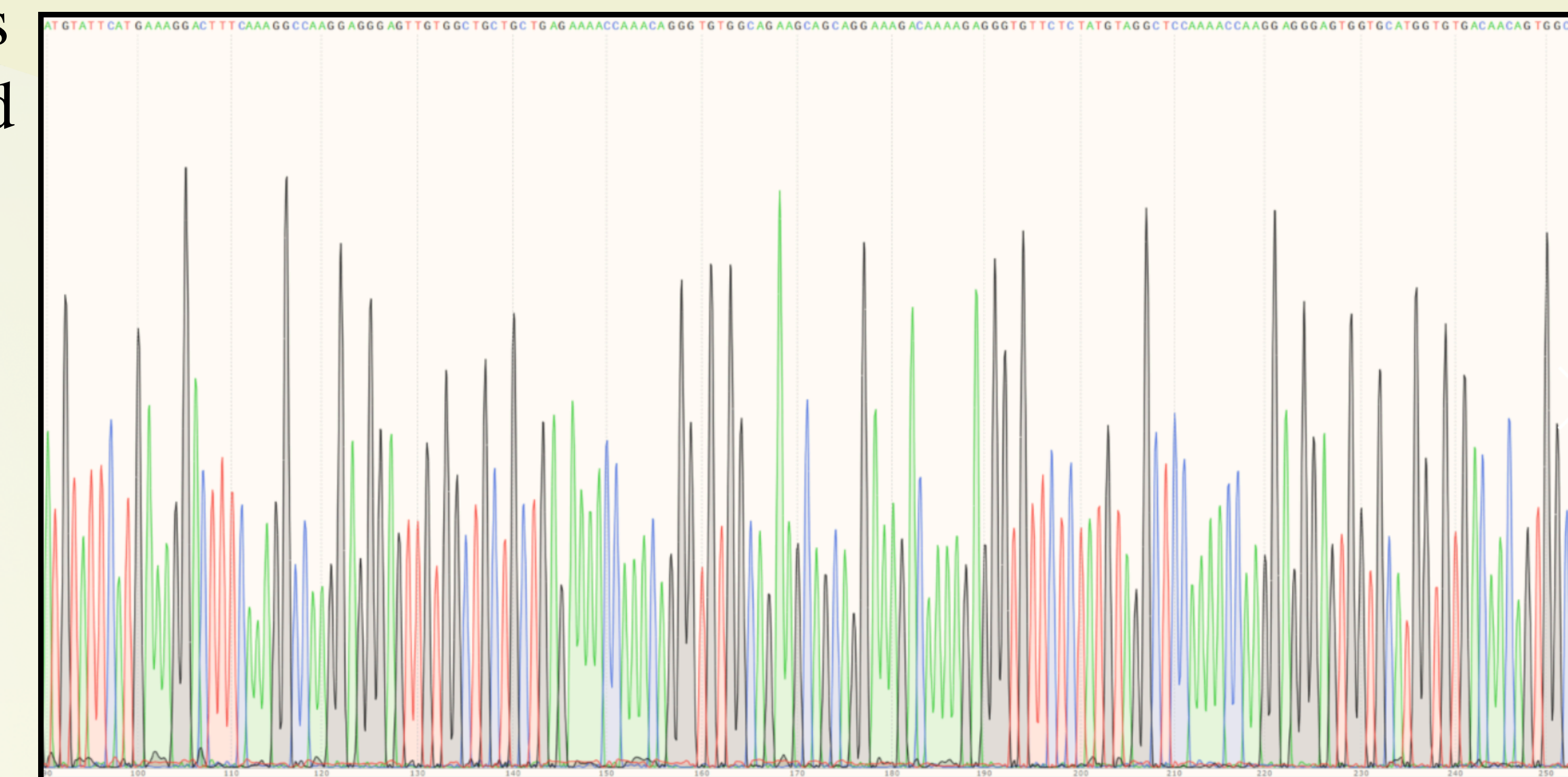
Understand how mis-folded proteins associated with Parkinson's disease are sequestered by the cell and how this process affects toxicity of the mis-folded proteins.

Procedure

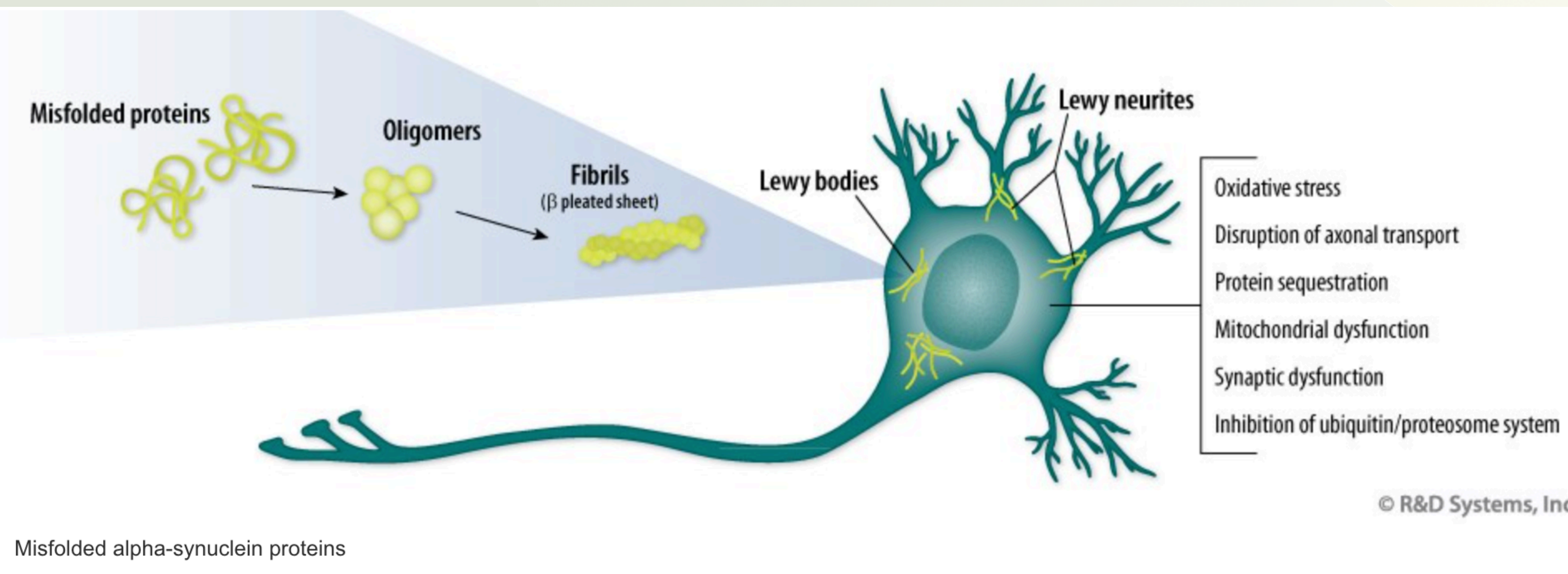
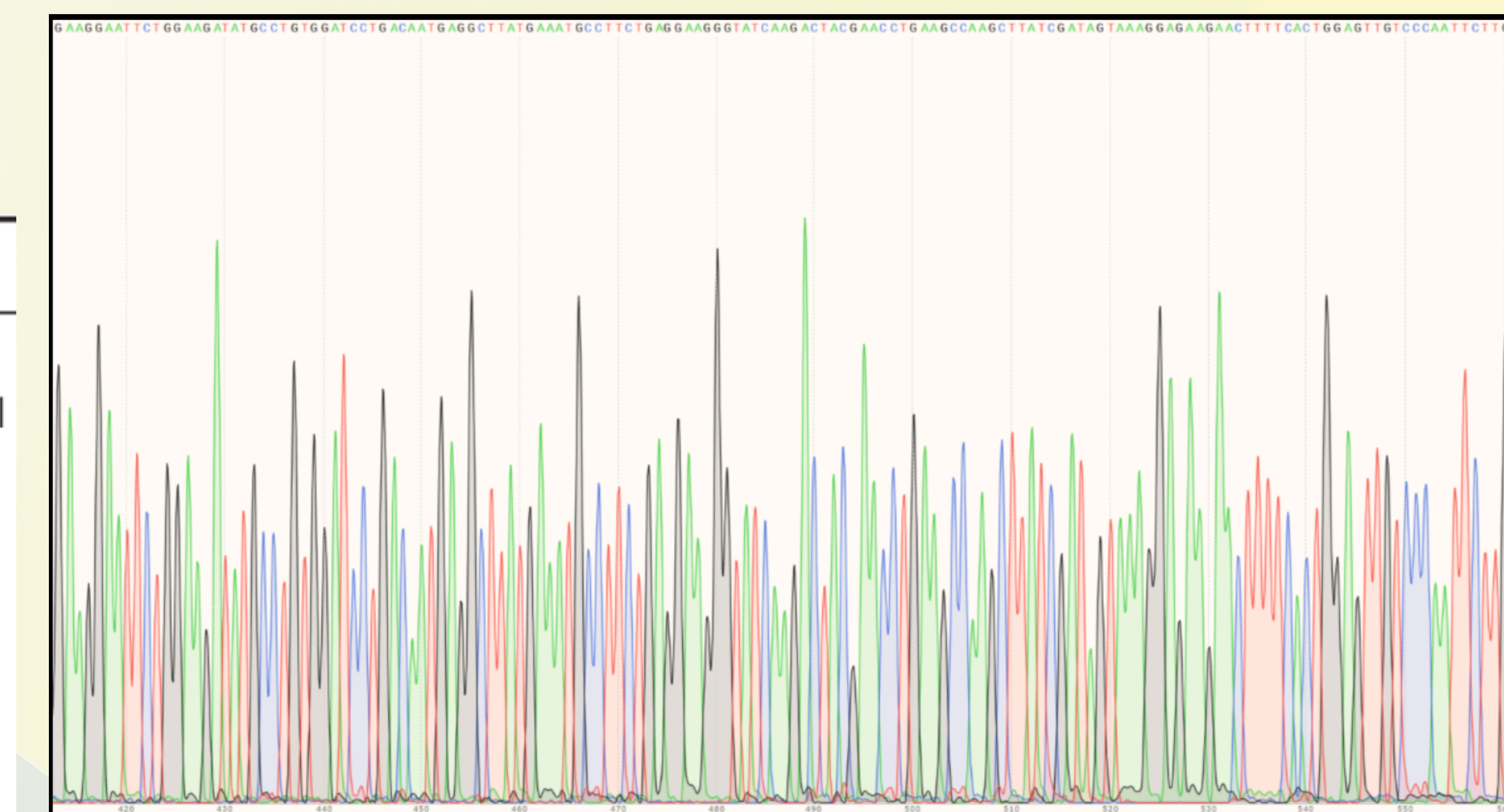
Made mini preps of the two plasmids of alpha-synuclein, one wild type and one with the A53T mutation. Then, transformed the yeast so the alpha-synuclein is present.

Results

Sequencing Histogram



Sent alpha-synuclein plasmids for sequencing since there was no present growth on the LEU plates.



Background

Parkinson's disease is one of the most common neurodegenerative diseases. This disease is caused by the sequestration of accumulated mis-folded proteins in the brain. Alpha-synuclein toxicity results in the impairment of a cell's organelles further leading to cell death.

PD	
Neuropathological profile	
Synucleinopathy/Lewy bodies	α -syn inclusions in cell bodies and axonal processes of neurons and glia
Tauopathy/NFT	Rare
Behavioural symptoms	
REM sleep behaviour disorder	✓
Depression	✓
Hallucinations	Low rate
Delusions	✓
Memory loss	Rare
Motor symptoms	
Bradykinesia	✓
Tremor	✓
Postural instability	✓
Rigidity	✓
Clinical profile	
Attention/executive function	✓
Visuospatial dysfunction	✓
Language impairment	✓
Memory impairment	✓

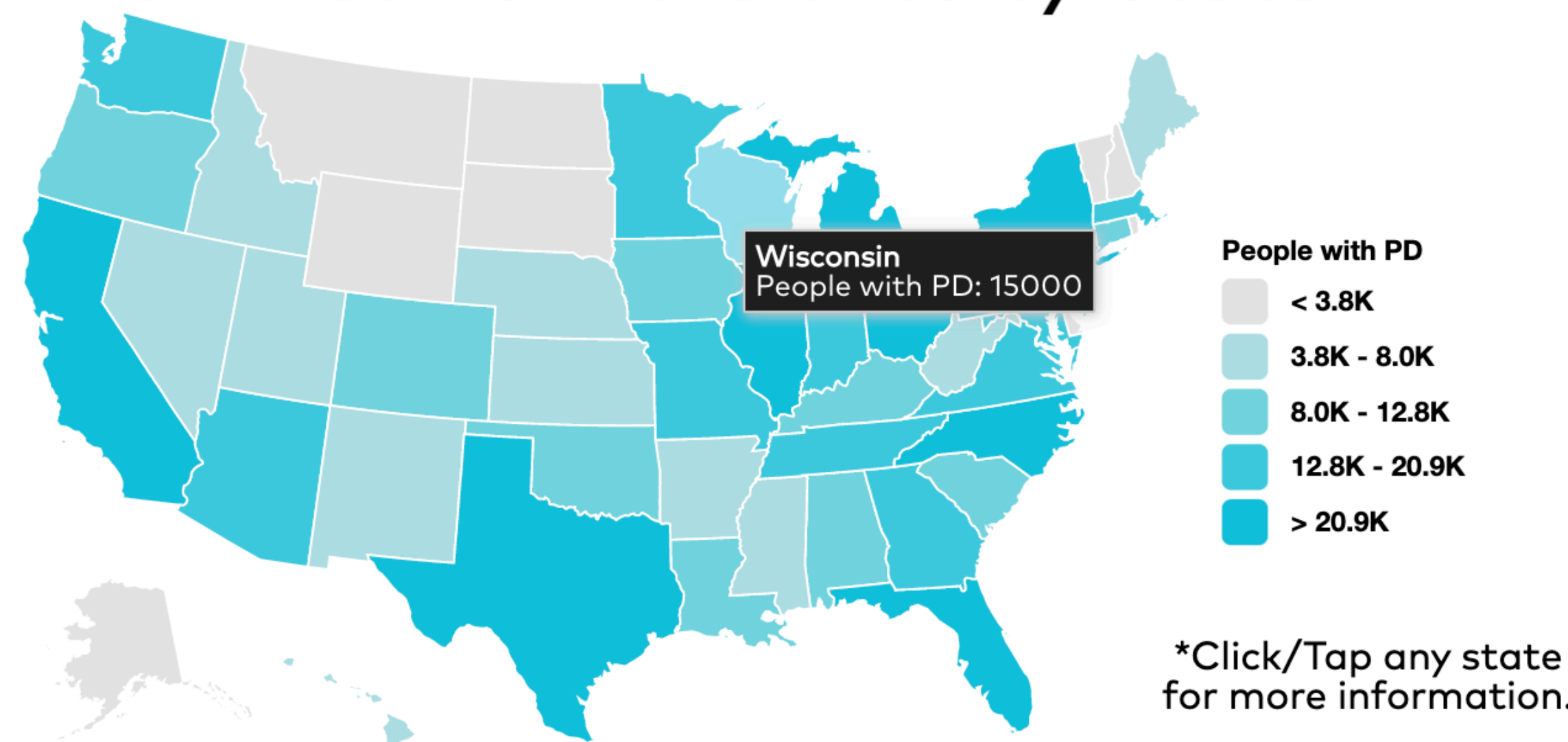
Next Steps

- Fluorescence Microscope: observe which subcellular component alpha-synuclein is present in
- Western Blots: check expression levels

References

<https://onlinelibrary.wiley.com/doi/epdf/10.1111/bpa.12370>
<https://link.springer.com/article/10.1007%2Fs11064-018-2673-x>
<https://www.rndsystems.com/resources/articles/alpha-synuclein-based-model-studying-parkinsons-disease-pathology>
<https://www.parkinson.org/Understanding-Parkinsons/Statistics>
 Sontag, Samant, Frydman. Ann Rev Biochem. 2017.

Parkinson's Prevalence by State*



What is it? Parkinson's Foundation study to determine Parkinson's disease (PD) prevalence in North America.

930,000 people in the U.S. with PD by 2020

1.2 million people in the U.S. with PD by 2030

<https://www.parkinson.org/Understanding-Parkinsons/Statistics>