

## Marquette Internet Explorer & Firewall Configuration Tool Installation Instructions

1. Go to <http://www.marquette.edu/its/help/downloads> and follow links to download the tool.



### Marquette Configuration Tool for Windows

The Marquette University Internet Explorer and Firewall Configuration Tool adjusts your Windows Firewall and Internet Explorer Popup blocker settings to allow Marquette web sites and applications to work properly.

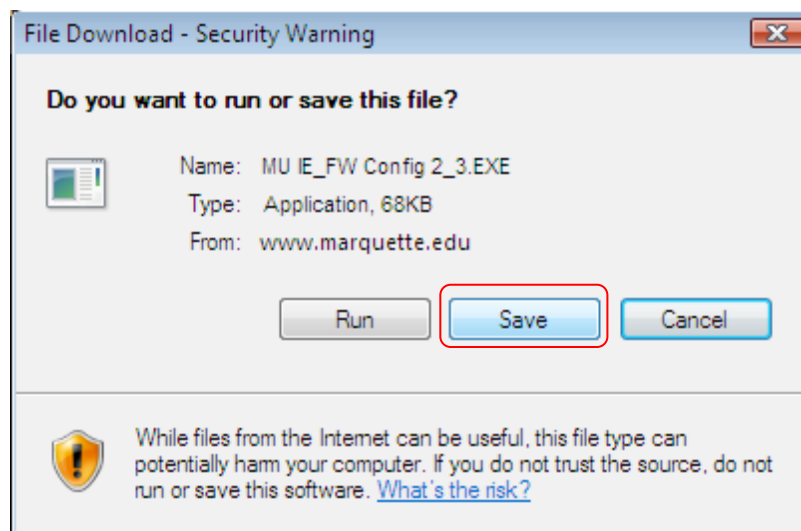
▶ [Find out more and download the tool](#)

2. Click on **Download the MU IE & FW Config Tool**.

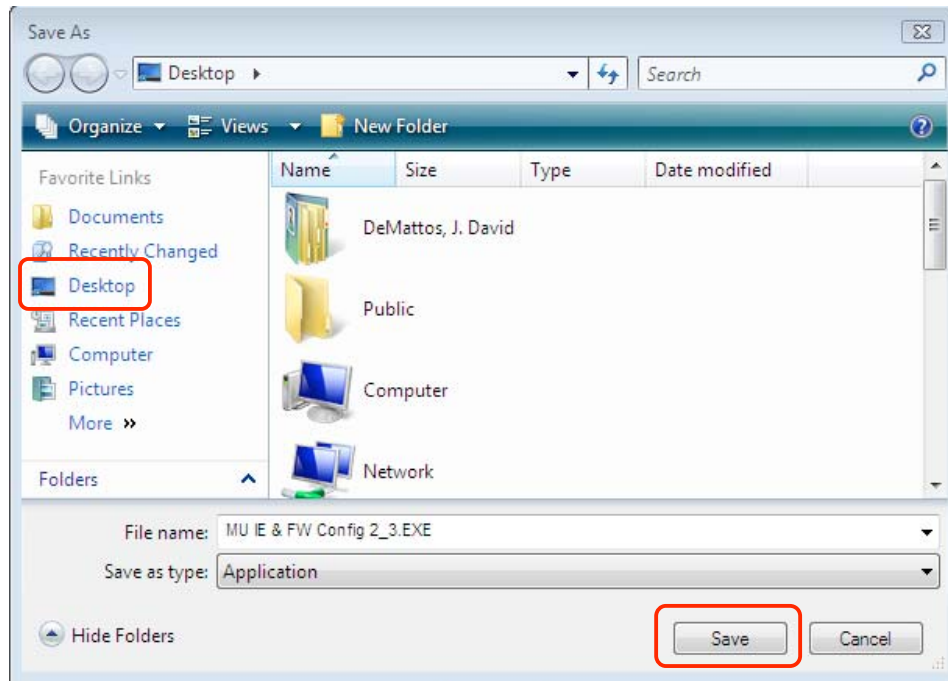
▶ [Download the MU IE & FW Config Tool](#)

▶ [Download installation instructions \(PDF\)](#)

3. When the **File Download – Security Warning** window appears, click on **Save**.



4. Select **Desktop** in the left margin and then click on **Save**.



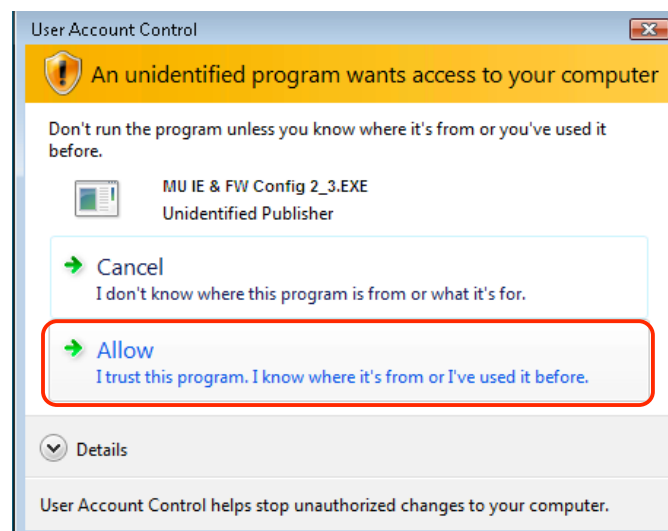
5. After the file is saved, close all open windows. Find the **MU IE & FW Config 2\_3.EXE** file on your Desktop and follow the instructions below which pertain to your operating system.

#### Microsoft Windows XP and Windows 2000:

Double click on the file and then proceed to step 6.

#### Microsoft Windows Vista:

Double click on the file and when the "User Account Control" window appears, click on **Allow**.



Proceed to step 6.

6. When the “Marquette University License Agreement” window appears, click on **Yes**.



Installation will now begin.

7. Wait until all windows close.

Installation is now complete.